

## Hyper Location solution for workforce safety and efficiency.

Guardian provides field staff in high-stress and hazardous environments with comprehensive tools to execute their work safely and efficiently. Guardian deploys on a wide range of mobile smart devices and integrates with its intelligence platform to transform data from the field into actionable information.

### Guardian App

The Guardian App is the mobile component of the Guardian solution. It installs on all mainstream Android devices.

### Real-time Hyper Location

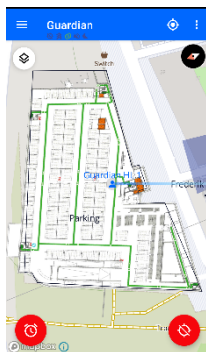
Guardian ensures seamless outdoor and indoor positioning.

**Location Fusion** – Guardian fuses positioning information coming from different sources: GNSS, Bluetooth, and Wifi hotspots. Combining these sources with previously known positions, Guardian calculates the best-fit position fix.

**Inertial Positioning** – Guardian’s unique AI engine relies on the device’s inertial sensors to position people in the most demanding environments, even when GNSS or other infrastructures are very limited. This capability reduces the needed beacons amount by a factor of 3 to 10, depending on the case.

### Personal Safety

Guardian offers a broad range of features to ensure the Personal Safety of people in the field.



### Personal Situational

**Awareness** – Guardian offers field operators a fully integrated map depicting their positions and locations of team members. Overlays include geofences, maps, ongoing alerts, and building blueprints.

**Alerting** – Operators can activate alerts by pressing

either a hardware or software button on the mobile device. This results in a loud alarm and the sending of an alert message to the Supervisors.

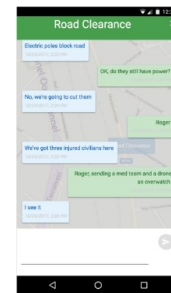
**Alert notifications** – When alerts occur, Supervisors using the Guardian app get notified by sound, which continues until the notification is acknowledged. Supervisors can directly call the alerting device.

**Man down & Fall detection** – Guardian’s advanced algorithms provide multi-layered protection in determining Operator status without interfering with the ongoing work.

**Listen-in and voice** – In case of an emergency, the Operator or the Supervisor can activate Silent Listening-in of the device. On devices equipped with a camera, Silent-Viewing (\*) can be activated.

### Secure Instant Messaging (\*)

– Communicate in real-time via encrypted text message and share geo-referenced operational icons. Attachments such as images, video, and documents can be added.

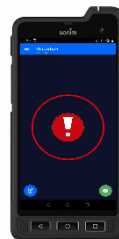


### Secured Fielding

**ATEX** – Guardian is fully compatible with off-the-shelf ATEX smart devices for safe deployments in High-Risk environments.

**Access Control** – Organizations rely on Guardian to ensure that only authorized persons have access to certain areas or operate specific equipment.

**Kiosk** – Guardian optionally configures to be the only APP accessible by Operators. In case of loss, the device can be remotely erased.



(\*) RoadMap 2022

## Guardian Platform

The Guardian platform offers a set of feature-rich capabilities to ensure complete control and awareness of ongoing operations.



## Operational Management

Supervisors monitoring ongoing operations dispose of a range of intuitive tools and dashboards.

**Situational Awareness Display** – Time-sensitive 2D / 3D depiction of operational data, sensor feeds, maps, blueprint, imagery. The embedded time view showing the sequence of events, sensor measurements, alerts, etc.

**4D Geofences** – Guardian supports a multitude of 3D spatial and temporal geofences. These enable to set entry/exit alerts and maximum occupancy alerts.

**Search** – Users can look up staff and asset locations based on keywords, geospatial bound, and time.

**Alert notifications** – When alerts occur, Supervisors are notified visually and by sound.

**Playback dashboard** – Supervisors can go back in time to replay previously collected & recorded data. This function facilitates search and rescue, lessons learned, and post-action reviews.

## Site Management

The site management capability allows our customers to configure the Guardian platform to match their operational environment and integrate diverse data sources.

**Rapid Building Modelling** – Users can easily create multi-floor building models with a couple of clicks. The building wizard enables to integrate and fine-tune floor plan layouts. Supported formats include PNG and JPEG. This tool can also be used to rapidly integrate any geo-referenced image such as outdoor

event plans, evacuation plans, exports from 3<sup>rd</sup> party tools, hand-drawn plans, etc.

**Tracker Plugins** – Users can add 3<sup>rd</sup> party trackers to capture their location updates and alerts. Supported trackers include Teltonika and Twig(\*).

**IoT Sensor Plugins** – Additional sensor feeds can be plugged into the solution to increase the integration with a site's smart infrastructure.

## Guardian Alerting & Location IoT

Epic Blue has designed Guardian to scale with the customer's need. The solution plugs into existing dispatch centres which offer a 24/7 monitoring and alert response service.

## Real-time service and database

The Guardian platform can provide positions, alerts, and IoT data to 3<sup>rd</sup> party systems. This includes data captured by the Guardian App.

**Data streaming** – Real-time location streams are available as MQTT messages. Customer-specific feeds can be plugged into the outbound stream (NMEA, XML, JSON)

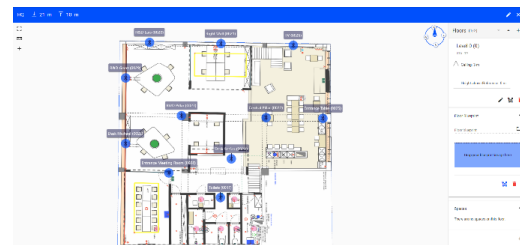
**API** – Guardian publishes a REST API for ease of integration with 3<sup>rd</sup> party systems.

## No Coding Rules Engine

The rules engine reduces the human effort needed to manage operations efficiently. It increases the safety of staff and resources.

**Alert, triggers, workflows** – Users can manage comprehensive rules to generate alerts and trigger further actions. The rules library incorporates multiple building blocks. These combine into real-life workflows.

**Building blocks (\*)** – Geo-Rules include entering, existing, missed ETA, exclusion of access, maximum asset count, overlap in deployment activity, proximity, etc.



(\*) RoadMap 2022