

Sonim[®] Spot[™] H500

5G Mobile Hotspot Quick Start Guide



sonim.

Getting started with your new Sonim[®] Spot[™] H500 5G Mobile Hotspot

/01

Contents:

Sonim H500

Battery in Sonim H500

Wall charger

USB Type-C cable

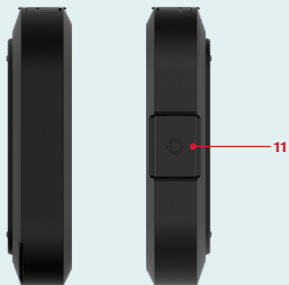
Quick Start Guide

SIM card

(Not included for all carriers)

1. Test ports
2. Ethernet port (RJ45)
3. USB Type-C port
4. Status LED
5. Signal strength
6. Display
7. Connections info
8. Battery indicator
9. Menu
10. Wi-Fi info
11. Power button
12. Battery (under battery cover)
13. SIM Tray (under battery)
14. Battery cover opening



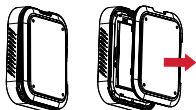


How to insert a SIM

Check with your service provider if the SIM card is pre-installed already. If SIM card is not pre-installed, or the SIM card must be replaced:

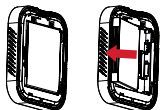
Step 1

Remove the battery cover using the thumb catch on the back edge of the H500.



Step 2

Remove the battery.



Step 3

Align the cutout tab using the diagram on H500 and gently slide the SIM card into the slot with the gold metal side down.

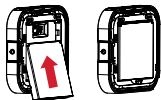


How to insert the battery

Prior to first use, open the battery door and remove the plastic tab on the battery.

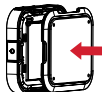
Step 1

Insert the battery flush into the cavity such that the three metallic contacts on the top of the battery are aligned with the metallic contacts within the battery compartment.



Step 2

Close the battery cover.



Note: The battery in your H500 is not fully charged. We recommend charging the device for 3 hours with the inbox wall charger and USB cable before use.

Set up your H500

1. Press and hold the Power button for 3 seconds.
2. Open the Wi-Fi application or controls on your laptop or Wi-Fi-enabled device that you want to connect to your H500.
3. Find your H500's Wi-Fi name (SSID).
There are three Wi-Fi names (SSID) in your H500, enter the password to connect any of the three SSIDs for the Internet access.

Note: the Wi-Fi names (SSIDs) and password appear on the screen (under Wi-Fi Info).

Device management

1. On your Wi-Fi device or laptop that is connected to your H500, type **http://192.168.1.1** or **http://sonim.mobilehotspot/** in the browser bar.
2. Enter the **Username** and **Password**.
3. Click **Login**. You can modify the user credentials if you require.

Note: The default username is “admin”. The password can be found by navigating to Menu>Help>Admin Website.

Information on how to change your Username and Password can be found in the user guide at www.sonimtech.com.

Warranty

Sonim Technologies provides a 1-Year warranty on your H500. Please register within 30 days of purchase at www.sonimtech.com/register to receive product information and updates. For more information related to the warranty, please contact your service provider.

Support

Web: sonimtech.com

Email: support@sonimtech.com

Phone: 1-833-697-6646

Monday – Friday: 24 hours a day
Saturday & Sunday: 9am-6pm ET

Download a User Guide:

from sonimtech.com or
call 1-833-MY-SONIM (1-833-697-6646)