

THE SAFELINQ PLATFORM AND THE ULTRA-RUGGED SONIM XP3340 SENTINEL OFFER YOU MAXIMUM SECURITY AND SAFETY!

For lone-workers that perform their daily work in risky, dangerous and even violent environments the Sonim XP3340 Sentinel combined with the Safelinq platform offers the perfect solution for security and the answer to requirements for employer compliance to health and safety laws.

The ultra-rugged Sonim XP3340 Sentinel offers a safe and highly reliable solution enabling you to easily send an alarm signal when in need or in case of emergencies.

With one press of the button you can easily send red, amber or green alerts with location information to the Safelinq platform via GPRS or SMS (if you are at a location with poor GPRS coverage).

You can use the Safelinq service via the out-of-the-box web solution or integrate it in your own IT environment by means of an API. By default access you will receive access to your own online dispatch emergency center where you can monitor and manage alerts and print reports.

KEY ADVANTAGES:

LOCATION HISTORY

You can set a start / end time for the service, as well as the interval with which the location is refreshed. The Sonim XP3340 Sentinel will automatically forward the current location to the Safelinq platform at the set times.

MAN-DOWN FUNCTION

The man-down function is a movement sensor which sends an alarm when the sensor is activated.



MOST IMPORTANT FEATURES OF THE SONIM XP3 SENTINEL COMBINED WITH SAFELINQ SERVICE:

- TRACK & TRACE VIA GPS
- REPORTING TIME WINDOW
- RED EMERGENCY BUTTON
- MOVEMENT SENSOR / ALARM
- REPORTING FEATURE
- ONE BUTTON STATUS UPDATES
- ON/OFF STATUS MESSAGING
- NON-MOVEMENT ALARM
- COMPANY RESCUE ALARM
- GEO FENCING

ON / OFF STATUS

Sends a message to the monitoring centre when the Sonim XP3340 Sentinel is switched on or off or if the battery level is low.

RED EMERGENCY BUTTON

When the red emergency button is pressed, a pre-configured phone number is automatically called and your position will be sent to the emergency centre. The amber and green button can be set up according to the customer's needs, e.g. to request monitoring and tracking.

OTA MANAGEMENT

All settings of a device can be managed remotely.

STATUS VIA BUTTON

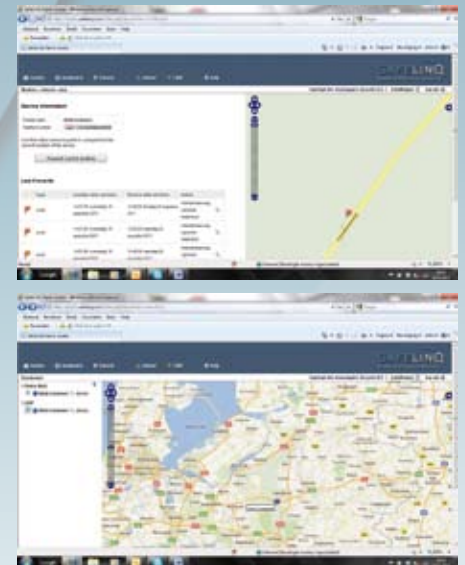
The regular keys of the Sonim XP3340 Sentinel can be programmed in a way that an active position is sent to the platform and its managers when this button is held for a few seconds. This message can be used for an 'arrived at location', 'safety risk' or 'entering building without GPS' report for example.



sonim
BUILT FOR LIFE™

COMPANY RESCUE ALARM

On the website you can set which persons have to receive which alarms. The alarms correspond with the keys of the device, for example, key 5 could mean FIRE. The set persons will directly receive the FIRE message by e-mail and / or SMS, plus a possible location of the relevant report.



SAFELINQ
Global Safety and Security

IDEAL FOR LONE WORKERS, SUCH AS SECURITY OFFICERS, COURIERS, HEALTH PERSONNEL, CONSTRUCTION AND OFFSHORE

RESISTANT TO WATER, SAND, DUST, MUD, SHOCKS, IMPACTS AND EXTREME TEMPERATURES!!

KEEPING YOU SAFE - SONIM XP3340 SENTINEL

No matter how harsh the situation, the Sonim XP3340 Sentinel is the ultimate safety phone for lone workers in extreme environments. Fully water submersible (IP-68 rated), MIL-810G certified and equipped with high performance GPS, long battery life, a LED torch, a 2MP camera and a state-of-the-art "man-down" sensor based on a three-axis accelerometer - the Sonim XP3340 Sentinel goes beyond extreme durability.

The Sonim XP3340 Sentinel contains built-in software for lone worker protection and a "man-down" motion sensor that detects impact, tilt, free fall and no-movement.

Key safety functions include the dedicated red emergency button, operable even when the phone keypad is locked, that sends a GPS location and calls the Emergency Response Center. The amber and green buttons can be set up according to the customer's needs - for example the amber button may request monitoring and tracking and the green button may track the start and end of a shift.

Backed by Sonim's industry-leading 3-Year Comprehensive Warranty, the Sonim XP3340 Sentinel will keep you safe and connected - no matter where you are.

TECHNICAL SPECIFICATIONS

- IP-68 certification
- MIL-810G certification for salt, fog, humidity, transport shock and thermal shock
- Hardened rubber moulded to Fiberglass casing mix by dual injection process
- Rated to 2.0 meter drop onto concrete in any orientation
- Vibration protection from 5Hz to 500Hz and shock resistant up to 4G
- Non-porous casing blocks entry of micro-particles
- Operating range -20°C to +55°C
- Shock & scratch resistant 1.5mm thick Corning® Gorilla® Glass screen
- Impact resistant up to 5J on housing and 2J of impact energy on screen
- Sonim Lone Worker application
- Man Down sensor (3 axis accelerometer, configurable)
- 2MP camera with LED flash
- High performance GPS / A-GPS
- LED torch light
- FM radio
- Micro-SD Card slot (up to 2GB)
- GSM quad-band (850, 900, 1800, 1900 MHz) / GPRS, EDGE class 12
- Support for more than 21 languages
- Bluetooth 2.1 with DUN, OPP, SPP, HSP, HFP, PBAP
- SMS, MMS capacity up to 3,000 messages
- 1.750mAh battery: up to 24 hours talk time / up to 800 hours standby time / average of 29 hours for GPS tracking

BOX CONTENT

- Phone
- Wall charger
- Screwdriver
- USB cable
- Batterij 1.750 mAh
- Belt clip
- Stereo headset
- 3.5mm USB adaptor

Available to order: car charger and rugged belt clip

sonim
BUILT FOR LIFE™



LONE WORKER APPLICATION WITH PROFESSIONAL GPS
3 Dedicated colour coded keys



'MAN DOWN' FUNCTION
3 Axis accelerometer



RUGGED PERFORMANCE STANDARD
Tested and proven rugged



IP-68 SUBMERSIBLE TO 2 METERS FOR 1 HOUR IN WATER
Protected against damage from rain, fog, and salt air



BEYOND MIL SPEC-810G DROP TEST
Withstands 2 meter drops onto concrete



SCREEN TOUGHNESS
Corning® Gorilla® Glass: extreme shock & scratch resistance



LONG BATTERY LIFE
Up to 29 Hrs of GPS Tracking



NOISE CANCELLATION
Omn-directional microphone with noise cancellation



IP-68 IMPERVIOUS TO DUST AND MICRO-PARTICLES
Non-porous casing blocks entry of micro-particles



ACCESSIBLE KEYPAD
Widely spaced keys for ease of use with gloved hands

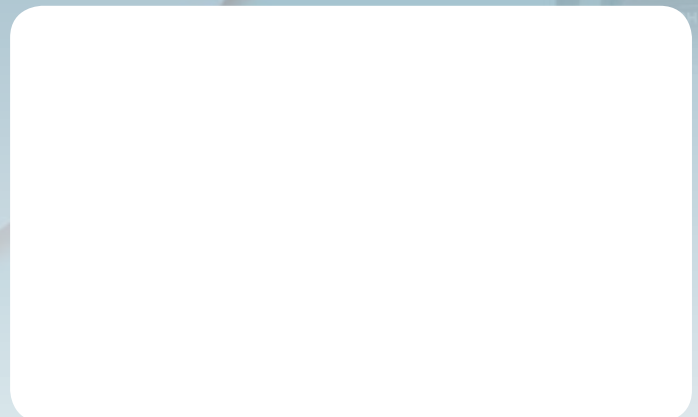


GEOFENCING
Alerts when crossing zone boundaries



3 **COMPREHENSIVE**
3-YEAR WARRANTY
Also covers accidental damage

Dealer:



SAFELINQ
Global Safety and Security