

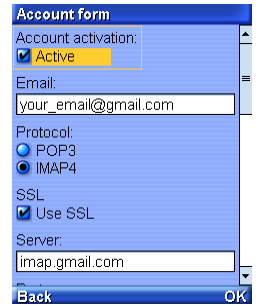


Installing mujMail

- 1- For mujMail to use GSM data network, you need to configure the correct APN for Profile5
 - 2- Open the Java box (under Menu > Applications > JAVA)
 - 3- Select Options > Embedded Applications > mujMail.jad
- After installation, select mujMail in Java box to run mujMail

Setting up a new mail account

- 1- Select "Accounts" Tab.
- 2- Select "New Account".
- 3- Fill in the required details.
- 4- Press "OK".



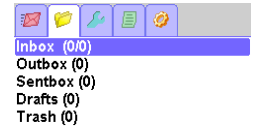
Retrieving new mails

- 1- Select "Menu" Tab.
- 2- Select "Retrieve mails".
- 3- Press "Select".



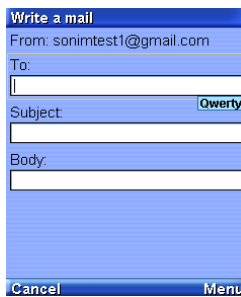
Menu - Folders

User can select the folders to view the inbox, outbox, drafts and trash contents in it.



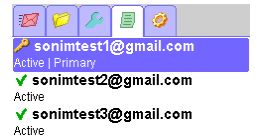
Writing a new mail

- 1- Select "Menu" Tab.
- 2- Select "Write a mail".
- 3- Fill in the required details.
- 4- Press "Menu > Send now".



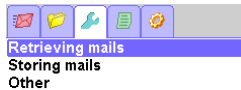
Creating Multiple Accounts

User can create multiple accounts, and can retrieve mails from those accounts, which are active and primary.



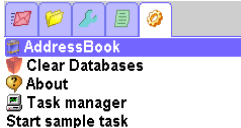
Settings

User can change the preferences as desired while retrieving mails, storing the mails and other options.



Utilities

This tab contains additional tools like address book, databases and task management



- A new (unread) email
- The email was read.
- The email was replied.
- The email is marked as deleted. This occurs when a user presses "Delete" command or "1" shortcut.
Note: the email is marked as deleted, but it is not physically deleted from the storage until the "Delete now!" command is pressed.
- The email contains attachments.
- The email was marked as "Flagged".